A photograph of construction workers at a training center. In the foreground, a worker wearing a blue hard hat and a yellow safety vest is partially visible. In the background, several workers are using long-handled tools to level and guide the pouring of concrete into a large, rectangular form. The background wall is made of grey concrete blocks. The scene is set outdoors, with gravel and concrete visible on the ground.

# **LiUNA!**

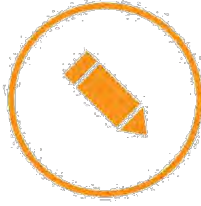
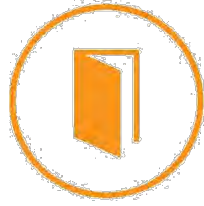
Local 527

## **Training Centre**

**2025**

**Training Programs**

# Registration and Training Requirements



**Members who are required by their Employer to take training are entitled to be paid by their Employer for their time in-class. If you have any questions, please speak with your Union Representative.**

- ◆ Registration for all programs opens 30 days in advance only. Please contact the Training Centre to register for any programs 613-723-2141; no early registrations will be accepted.
- ◆ All trainees must have completed and have a valid WHMIS and Working at Heights certificate in order to participate in any training programs (and be dispatched to employment).
- ◆ It is mandatory that all Apprentices register and attend the Apprenticeship Training in order to complete the necessary in school levels of training in order to complete and certify as a Construction Craft Worker. Notice will be provided of the registration time for the upcoming dates.
- ◆ In order to participate in the (CWB) Welding Program, you must have been a member of LIUNA Local 527 for a minimum of three (3) years and you must provide a “Near Sighted” eye exam that has been completed in the last 3 Months. Please contact the Training Centre to obtain the instruction form for the exam.
- ◆ In order to participate in the CWB recertification, proof of expired “CWB Certification” will be required or proof of Welding experience or training will be required.
- ◆ Personal Protective Equipment (PPE) will be required for certain programs being offered. You are required to bring your hard hat and CSA approved foot wear. Please note that proper outdoor clothing may also be required.

---

**Start times will be 8am or 9am and will be confirmed upon registration.**

For further program information please visit:  
[www.liunalocal527.com](http://www.liunalocal527.com)

- ◆ If you have not completed the “Mandatory Health & Safety Awareness” program please completed it by going on the below link.

**English:** <https://www.labour.gov.on.ca/english/hs/elearn/worker/foursteps.php>

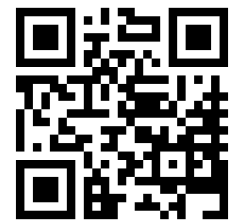
**Français:** <https://www.labour.gov.on.ca/french/hs/elearn/worker/foursteps.php>



Once completed, please provide a copy of your certificate to the Training Centre so that we can add it to your completed training. This program is only needed to be taken one time with no updates.

- ◆ For more information on programs, please visit our website

**[www.liunalocal527.com](http://www.liunalocal527.com)** →



## Program Update Requirements

- ◆ WHMIS 2015 GHS/WHMIS 2015 GHS Update & Review – must be completed annually. Please contact the Training Centre to obtain a PIN# to complete the program on line. 613-723-2141
- ◆ Propane Certificates must be updated every 3 years.
- ◆ Pipeline Construction Safety Training (PCST) must be updated every 5 years. (please contact the union office to obtain a PIN number)
- ◆ All equipment programs must be updated every 3 years.
- ◆ First aid & CPR must be updated every 3 years.
- ◆ Working at Heights must be updated every 3 years. In order to participate in the Working at Heights Update, you will require to have your Ministry of Labour Certificate number if you have not completed the initial program at the Training Centre.



**Start times will be 8am or 9am and will be confirmed upon registration.**

For further program information please visit:  
[www.liunalocal527.com](http://www.liunalocal527.com)

# Program Delivery Dates

Program	Date
Asbestos Abatement 253W (3 Days)	WEDNESDAY, JANUARY 22—FRIDAY, JANUARY 24
Basics of Supervising (2 Days)	MONDAY, JANUARY 27—TUESDAY, JANUARY 28 WEDNESDAY, JUNE 25—THURSDAY, JUNE 26
Chainsaw (PPE Required) (8 Hours)	WEDNESDAY, JANUARY 22 MONDAY, MARCH 3 TUESDAY, APRIL 1 TUESDAY, JUNE 10 MONDAY, AUGUST 18
Confined Spaces Modules 1-3 (2 Days) *Module 1 is required to be completed	THURSDAY, JANUARY 9—FRIDAY, JANUARY 10 THURSDAY, JANUARY 23—FRIDAY, JANUARY 24 THURSDAY, FEBRUARY 13—FRIDAY, FEBRUARY 14 TUESDAY, MARCH 11—WEDNESDAY, MARCH 12 WEDNESDAY, APRIL 2—THURSDAY, APRIL 3 WEDNESDAY, APRIL 16—THURSDAY, APRIL 17 THURSDAY, MAY 8—FRIDAY, MAY 9 THURSDAY, MAY 22—FRIDAY, MAY 23 MONDAY, JUNE 16—TUESDAY, JUNE 17 MONDAY, JULY 14—TUESDAY, JULY 15 MONDAY, AUGUST 18—TUESDAY, AUGUST 19 MONDAY, SEPTEMBER 15—TUESDAY, SEPTEMBER 16 MONDAY, OCTOBER 6—TUESDAY, OCTOBER 7 MONDAY, NOVEMBER 17—TUESDAY, NOVEMBER 18
Confined Spaces Module 4 (8 Hours)	FRIDAY, FEBRUARY 28 THURSDAY, MARCH 20 THURSDAY, APRIL 24
CWB Testing (Welding) (4 Days)	MONDAY, FEBRUARY 24—FRIDAY, FEBRUARY 28
Demo Bot (PPE Required) (3 Days)	MONDAY, MARCH 17—WEDNESDAY, MARCH 19 MONDAY, APRIL 14—WEDNESDAY, APRIL 16

Start times will be 8am or 9am and will be confirmed upon registration.

For further program information please visit:  
[www.liunalocal527.com](http://www.liunalocal527.com)



# Program Delivery Dates

Program	Date
Electrical Safety Awareness (8 Hours)	MONDAY, JANUARY 13 THURSDAY, JANUARY 30 MONDAY, FEBRUARY 10 TUESDAY, MARCH 4 TUESDAY, MARCH 25 TUESDAY, APRIL 15 THURSDAY, MAY 15 FRIDAY, JUNE 6 THURSDAY, JULY 17 TUESDAY, AUGUST 12
First Aid & CPR (2 Days)	MONDAY, JANUARY 6—TUESDAY, JANUARY 7 MONDAY, JANUARY 13—TUESDAY, JANUARY 14 MONDAY, FEBRUARY 3—TUESDAY, FEBRUARY 4 TUESDAY, FEBRUARY 18—WEDNESDAY, FEBRUARY 19 MONDAY, MARCH 10—TUESDAY, MARCH 11 MONDAY, MARCH 17—TUESDAY, MARCH 18 THURSDAY, APRIL 10—FRIDAY, APRIL 11 TUESDAY, APRIL 22—WEDNESDAY, APRIL 23 MONDAY, MAY 5—TUESDAY, MAY 6 MONDAY, MAY 26—TUESDAY, MAY 27 MONDAY, JUNE 2—TUESDAY, JUNE 3 WEDNESDAY, JULY 2—THURSDAY, JULY 3 TUESDAY, AUGUST 5—WEDNESDAY, AUGUST 6 TUESDAY, SEPTEMBER 2—WEDNESDAY, SEPTEMBER 3 MONDAY, SEPTEMBER 29—TUESDAY, SEPTEMBER 30 MONDAY, NOVEMBER 3—TUESDAY, NOVEMBER 4 MONDAY, DECEMBER 1—TUESDAY, DECEMBER 2

---

Start times will be 8am or 9am and will be confirmed upon registration.

For further program information please visit:  
[www.liunalocal527.com](http://www.liunalocal527.com)

# Program Delivery Dates

Program	Date
Forklift (PPE Required) (8 Hours)	SATURDAY, JANUARY 11 MONDAY, JANUARY 20 TUESDAY, JANUARY 28 TUESDAY, MARCH 18 FRIDAY, MAY 2 WEDNESDAY, JUNE 25 WEDNESDAY, AUGUST 27 WEDNESDAY, OCTOBER 29
Ground Disturbance (8 Hours)	WEDNESDAY, JANUARY 8 WEDNESDAY, FEBRUARY 5 MONDAY, FEBRUARY 24 TUESDAY, MARCH 11 TUESDAY, APRIL 1 TUESDAY, APRIL 29 THURSDAY, JUNE 5 TUESDAY, JULY 8
Joint Health & Safety Committee (JHSC) Part 1 & 2 (6 Days)	PART 1—TUESDAY, MARCH 18—THURSDAY, MARCH 20 PART 2—TUESDAY, MARCH 25—THURSDAY, MARCH 27 PART 1—TUESDAY, APRIL 22—THURSDAY, APRIL 24 PART 2—TUESDAY, APRIL 29—THURSDAY, MAY 1
Health & Safety Rep (2 Days)	WEDNESDAY, FEBRUARY 26—THURSDAY, FEBRUARY 27 TUESDAY, APRIL 1—WEDNESDAY, APRIL 2 TUESDAY, APRIL 29—WEDNESDAY, APRIL 30

**LiUNA! LOCAL**  
**527**  
*Safety First*

Start times will be 8am or 9am and will be confirmed upon registration.

For further program information please visit:  
[www.liunalocal527.com](http://www.liunalocal527.com)

# Program Delivery Dates

Program	Date
Hoisting & Rigging (2 Days)	MONDAY, JANUARY 20—TUESDAY, JANUARY 21 THURSDAY, FEBRUARY 6—FRIDAY, FEBRUARY 7 THURSDAY, MARCH 13—FRIDAY, MARCH 14 TUESDAY, MARCH 25—WEDNESDAY, MARCH 26 MONDAY, MAY 12—TUESDAY, MAY 13 THURSDAY, JUNE 12—FRIDAY, JUNE 13 THURSDAY, JULY 10—FRIDAY, JULY 11 THURSDAY, AUGUST 14—FRIDAY, AUGUST 15 THURSDAY, SEPTEMBER 11—FRIDAY, SEPTEMBER 12 THURSDAY, OCTOBER 9—FRIDAY, OCTOBER 10 THURSDAY, NOVEMBER 13—FRIDAY, NOVEMBER 14
Line & Grade (5 Days)	MONDAY, MARCH 3—FRIDAY, MARCH 7
Mini-Excavator (PPE Required) (8 Hours)	MONDAY, JANUARY 6 THURSDAY, JANUARY 16 WEDNESDAY, JANUARY 29 SATURDAY, FEBRUARY 8 WEDNESDAY, MARCH 5 SATURDAY, MARCH 22 MONDAY, MARCH 24 WEDNESDAY, APRIL 2 SATURDAY, APRIL 26 WEDNESDAY, MAY 21 WEDNESDAY, JUNE 4 WEDNESDAY, JULY 16 WEDNESDAY, AUGUST 20 WEDNESDAY, SEPTEMBER 10 WEDNESDAY, OCTOBER 8 WEDNESDAY, NOVEMBER 12

---

Start times will be 8am or 9am and will be confirmed upon registration.

For further program information please visit:  
[www.liunalocal527.com](http://www.liunalocal527.com)

# Program Delivery Dates

## Program

## Date

**Overhead Crane**  
**(PPE Required)**  
**(8 Hours)**

**MONDAY, JANUARY 20**  
**TUESDAY, FEBRUARY 18**  
**FRIDAY, MARCH 21**  
**FRIDAY, MAY 16**  
**FRIDAY, AUGUST 22**  
**MONDAY, OCTOBER 27**

**Propane**  
**(PPE Required)**  
**(5 Hours)**

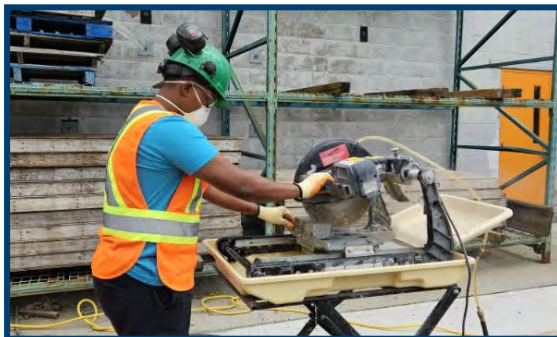
**MONDAY, JANUARY 6**  
**FRIDAY, JANUARY 17**  
**MONDAY, FEBRUARY 3**  
**SATURDAY, FEBRUARY 8**  
**TUESDAY, FEBRUARY 25**  
**FRIDAY, OCTOBER 3**  
**FRIDAY, OCTOBER 24**  
**FRIDAY, NOVEMBER 7**  
**FRIDAY, NOVEMBER 21**  
**FRIDAY, DECEMBER 5**

**Quick Cut Safety**  
**(PPE Required)**  
**(8 Hours)**

**WEDNESDAY, JANUARY 29**  
**THURSDAY, MARCH 13**

**Sandblasting**  
**(PPE Required)**  
**(2 Days)**

**TUESDAY, APRIL 1—WEDNESDAY, APRIL 2**



**Start times will be 8am or 9am and will be confirmed upon registration.**

For further program information please visit:  
[www.liunalocal527.com](http://www.liunalocal527.com)



# Program Delivery Dates

## Program

**Scissorlift & Aerial Manlift  
(PPE Required)  
(8 Hours)**

## Date

WEDNESDAY, JANUARY 8  
MONDAY, JANUARY 27  
WEDNESDAY, FEBRUARY 5  
SATURDAY, FEBRUARY 22  
SATURDAY, MARCH 6  
WEDNESDAY, MARCH 19  
SATURDAY, APRIL 5  
THURSDAY, APRIL 10  
WEDNESDAY, APRIL 16  
WEDNESDAY, APRIL 30  
WEDNESDAY, MAY 28  
WEDNESDAY, JULY 2  
WEDNESDAY, AUGUST 6  
WEDNESDAY, SEPTEMBER 3  
WEDNESDAY, OCTOBER 1  
WEDNESDAY, NOVEMBER 5



**Start times will be 8am or 9am and will be confirmed upon registration.**

For further program information please visit:  
[www.liunalocal527.com](http://www.liunalocal527.com)

# Program Delivery Dates

## Program

## Date

**Skidsteer  
(PPE Required)  
(8 Hours)**

SATURDAY, JANUARY 11  
TUESDAY, JANUARY 21  
WEDNESDAY, FEBRUARY 19  
SATURDAY, FEBRUARY 22  
WEDNESDAY, FEBRUARY 26  
THURSDAY, MARCH 20  
SATURDAY, MARCH 22  
WEDNESDAY, APRIL 9  
SATURDAY, APRIL 26  
WEDNESDAY, MAY 7  
WEDNESDAY, JUNE 18  
WEDNESDAY, JULY 9  
WEDNESDAY, JULY 30  
WEDNESDAY, SEPTEMBER 17  
WEDNESDAY, OCTOBER 15  
WEDNESDAY, NOVEMBER 19

**Swing Stage—User  
(PPE Required)  
(8 Hours)**

TUESDAY, JANUARY 7  
FRIDAY, JANUARY 10  
TUESDAY, FEBRUARY 4  
SATURDAY, MARCH 8  
MONDAY, MARCH 17  
FRIDAY, JUNE 20  
TUESDAY, AUGUST 5  
TUESDAY, OCTOBER 14



Start times will be 8am or 9am and will be confirmed upon registration.

For further program information please visit:  
[www.liunalocal527.com](http://www.liunalocal527.com)

# Program Delivery Dates

Program	Date
Telescopic Forklift (PPE Required) (8 Hours)	WEDNESDAY, JANUARY 15 SATURDAY, JANUARY 25 WEDNESDAY, FEBRUARY 12 WEDNESDAY, MARCH 12 SATURDAY, APRIL 5 WEDNESDAY, APRIL 23 WEDNESDAY, MAY 14 WEDNESDAY, JUNE 11 WEDNESDAY, JULY 23 WEDNESDAY, AUGUST 13 WEDNESDAY, SEPTEMBER 24 WEDNESDAY, OCTOBER 22 WEDNESDAY, NOVEMBER 26
Traffic Control Person (5 Hours)	WEDNESDAY, JANUARY 15 WEDNESDAY, JANUARY 22 TUESDAY, FEBRUARY 11 WEDNESDAY, MARCH 12 WEDNESDAY, APRIL 9 WEDNESDAY, APRIL 23 THURSDAY, MAY 1 WEDNESDAY, MAY 14 MONDAY, JUNE 9 MONDAY, JUNE 16 MONDAY, JULY 7 MONDAY, JULY 21 MONDAY, AUGUST 11 MONDAY, SEPTEMBER 8 TUESDAY, OCTOBER 7 MONDAY, NOVEMBER 10
Welding (PPE Required) (8 Weeks)	MONDAY, JANUARY 6—FRIDAY, FEBRUARY 21

Start times will be 8am or 9am and will be confirmed upon registration.

For further program information please visit:  
[www.liunalocal527.com](http://www.liunalocal527.com)

# Program Delivery Dates

Program	Date
WHMIS 2015/GHS (4 Hours)	SATURDAY, JANUARY 25 FRIDAY, JANUARY 31 MONDAY, FEBRUARY 24 WEDNESDAY, MARCH 26
Working at Heights (PPE Required) (Harness will be provided) (8 Hours)	THURSDAY, JANUARY 9 SATURDAY, JANUARY 11 THURSDAY, JANUARY 16 THURSDAY, JANUARY 23 SATURDAY, JANUARY 25 THURSDAY, JANUARY 30 THURSDAY, FEBRUARY 6 SATURDAY, FEBRUARY 8 THURSDAY, FEBRUARY 13 THURSDAY, FEBRUARY 20 SATURDAY, FEBRUARY 22 THURSDAY, FEBRUARY 27 THURSDAY, MARCH 6 SATURDAY, MARCH 8 THURSDAY, MARCH 13 THURSDAY, MARCH 20 SATURDAY, MARCH 22 THURSDAY, MARCH 27 THURSDAY, APRIL 3 SATURDAY, APRIL 5 THURSDAY, APRIL 10 THURSDAY, APRIL 17 THURSDAY, APRIL 24 SATURDAY, APRIL 26
*STARTING MAY 1ST WAH WILL BE OFFERED EVERY THURSDAY UNTIL THE END OF THE YEAR*	

---

Start times will be 8am or 9am and will be confirmed upon registration.

For further program information please visit:  
[www.liunalocal527.com](http://www.liunalocal527.com)

# Program Delivery Dates

## Program

## Date

Working at Heights Update  
(PPE Required)  
(Harness will be provided)  
(4 Hours)

FRIDAY, JANUARY 10  
SATURDAY, JANUARY 11  
FRIDAY, JANUARY 17  
FRIDAY, JANUARY 24  
SATURDAY, JANUARY 25  
FRIDAY, JANUARY 31  
FRIDAY, FEBRUARY 7  
SATURDAY, FEBRUARY 8  
FRIDAY, FEBRUARY 14  
FRIDAY, FEBRUARY 21  
SATURDAY, FEBRUARY 22  
FRIDAY, FEBRUARY 28  
FRIDAY, MARCH 7  
SATURDAY, MARCH 8  
FRIDAY, MARCH 14  
FRIDAY, MARCH 21  
SATURDAY, MARCH 22  
FRIDAY, MARCH 28  
FRIDAY, APRIL 4  
SATURDAY, APRIL 5  
FRIDAY, APRIL 11  
THURSDAY, APRIL 17  
FRIDAY, APRIL 25  
SATURDAY, APRIL 26

**\*STARTING MAY 2ND WAH UPDATE WILL BE OFERED  
EVERY FRIDAY UNTIL THE END OF THE YEAR\***

---

**Start times will be 8am or 9am and will be confirmed upon registration.**

For further program information please visit:  
[www.liunalocal527.com](http://www.liunalocal527.com)



# Program Delivery Dates

## CLASSES IN CORNWALL/FRENCH CLASSES/APPRENTICESHIP

**LOCATION: ROYAL CANADIAN LEGION BRANCH 297  
(415 SECOND STREET WEST, CORNWALL, ON)**

**Working at Heights (PPE Required) - Wednesday, March 26 (8 Hours)**

**Working at Heights Update (PPE Required) - Friday, March 21 (8 Hours)**

## PROGRAMMES DISPONIBLES EN FRANÇAIS

**Sécurité en Espace Clos, Modules 1-3 - MERCREDI 26 MARS—JEUDI 27 MARS  
(8 HEURES)**

**Module 1: Sensibilisation**

**Module 2: Analyse de l'air**

**Module 3: Programme de protection respiratoire et test d'adéquation**

**Veuillez noter que le SIMDUT 2015 GHS peut maintenant être complété en ligne.  
Veuillez contacter le Centre de formation pour obtenir un NIP afin de compléter le  
programme 613-723-2141.**

**System de Protection contre les chutes—Mardi 25 février (8 Heures)  
(Équipement de protection individuelle requis)**

## CONSTRUCTION CRAFT WORKER APPRENTICESHIP (CCW 450A)

**Construction Craft Worker—Level 2—Monday, January 6—Friday, March 7**

**Construction Craft Worker—Level 2—Monday, January 27—Friday, March 28**

**Construction Craft Worker—Level 2—Exam Prep—Monday, March 3—Friday, March 7**

**Construction Craft Worker—Level 2—Exam Prep—Monday, March 24—Friday, March 28**

**Construction Craft Worker—Level 1—Monday, April 7—Friday, May 30**

**Construction Craft Worker—Level 1—Monday, October 6—Friday, November 28**

---

**Start times will be 8am or 9am and will be confirmed upon registration.**

For further program information please visit:  
[www.liunalocal527.com](http://www.liunalocal527.com)

## Notes

This image shows a single sheet of white paper with horizontal blue ruling lines. The lines are evenly spaced and run across the width of the page. There are no margins, text, or other markings on the paper.

For further program information please visit:  
[www.liunalocal527.com](http://www.liunalocal527.com)



# LiUNA Local 527 Training & Education Centre

**6 Corvus Court  
Ottawa, Ontario K2E 7Z4  
Telephone: 613-723-2141**

